

## MSD Servo Drive Software with Safety PLC Function



### Error description

List of alarm and fatal error

## Content

<b>1</b>	<b>Generally information about alarm and fatal error at a safety network.....</b>	<b>3</b>
<b>2</b>	<b>System performance in case of alarm or fatal error.....</b>	<b>3</b>
<b>3</b>	<b>Getting information about safety alarm / fatal error .....</b>	<b>4</b>
<b>3.1</b>	<b>Error codes from non-safe drive .....</b>	<b>4</b>
<b>3.2</b>	<b>Information about safety error codes.....</b>	<b>6</b>
<b>3.3</b>	<b>List of alarm and fatal error codes.....</b>	<b>8</b>

ID no.: CC63329-001, Rev. 0.1

Date: 10/2018

This document is valid from firmware version:

Safe Firmware: V1.10-00

Non Safe Firmware: V124.00-08

Date: 10/2018

## Modifications

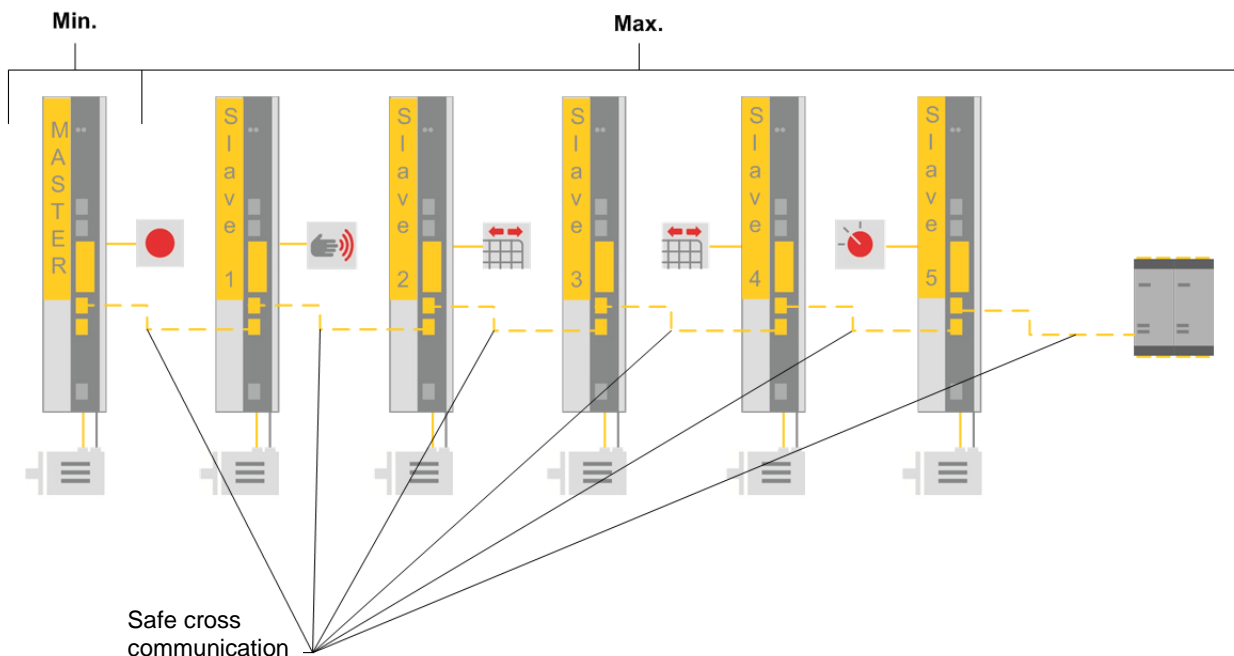
Date	Description
01.10.2018	First version

# 1 Generally information about alarm and fatal error at a safety network

A MSDFS device can be used as standalone or in an axis network.

Such a network can handle up to six MSDFS devices.

In any case the first axis is the network master and all other devices are slaves.



## 2 System performance in case of alarm or fatal error

An **alarm** at a safety network (independently which device) triggers the master device to disable all outputs.

It is possible to reset an alarm - so the master device acknowledges all slave alarms and reset the network status to "RUN".

A **fatal error** triggers the master device to disable all outputs as well, but it interrupts the safe cross communication additionally.

So it's not possible to reset the network from the master, at first each fatal error has to be reset at the slave device directly. Afterwards the master can reset the network.

## 3 Getting information about safety alarm / fatal error



In case of alarm or fatal error the device gives out different codes from different sources with different meanings.

To differentiate their meanings the following chapter shows the difference.

### 3.1 Error codes from non-safe drive

The following table shows error number, error location and a short description of a kind of collective messages from the non-safe drive.

It will be the first information the user gets from the system at Moog DRIVEADMINISTRATOR or device display.

 Fatal errors, no acknowledge possible (software reset or power-on reset required)		
Error-No.	Area	Text
19	1..16	...according to main line product (MSD, MSD Compact)
	17	Functional safety - Safety-system run-up with illegal firmware
	18	Functional safety - Firmware-update of safety-system failed
	19	FPGA firmware and non-safe firmware mismatch (also MSD, MSD Compact)
	20	Invalid safety production data
	21	CRC failure of non-safe ROM (also MSD, MSD Compact)
	22	No support of software part or hardware option in this software version
	23	Functional safety, fatal error on system A. Additional ID delivers error number on safety system A (only safety errors on system A with attribute <i>NoReset</i> ). Additional text delivers error text and remedy in view of safety. Default remedy is to switch off / on device.
	24	Functional safety, fatal error on system B. Additional ID delivers error number on safety system B (only safety errors on system B with attribute <i>NoReset</i> ). Additional text delivers error text and remedy in view of safety. Default remedy is to switch off / on device.
 Safety errors, detected in non-safe firmware (no safety relevance), acknowledge possible		
Error-No.	Area	Text
47	1	Communication to safety software lost / disturbed
	2	Error in command interface to safety operating system
	3	Error while downloading a PLC application file (configuration or program)
	4	Error while uploading a PLC application file (configuration or program)

	5	Invalid safety firmware or CRC failure (detected from safety BIOS, safety OS is not started, new safety firmware required)
--	---	--



Errors or alarms on safety system, acknowledge possible

Additional ID delivers error or alarm number on safety system A or B (only safety errors or alarms on system A or B without attribute *NoReset*).

Additional text delivers error text and remedy in view of safety.

Default remedy is to read additional information, check safety system or wiring and acknowledge alarm/error.

Error-No..	Area	Text
49	1	Alarm on safety master or local slave (system A)
	2	Alarm on safety master or local slave (system B)
	3	Alarm on safety slave 1 (system A) ( <i>this error is set by a master device only</i> )
	4	Alarm on safety slave 1 (system B) ( <i>this error is set by a master device only</i> )
	5	Alarm on safety slave 2 (system A) ( <i>this error is set by a master device only</i> )
	6	Alarm on safety slave 2 (system B) ( <i>this error is set by a master device only</i> )
	7	Alarm on safety slave 3 (system A) ( <i>this error is set by a master device only</i> )
	8	Alarm on safety slave 3 (system B) ( <i>this error is set by a master device only</i> )
	9	Alarm on safety slave 4 (system A) ( <i>this error is set by a master device only</i> )
	10	Alarm on safety slave 4 (system B) ( <i>this error is set by a master device only</i> )
	11	Alarm on safety slave 5 (system A) ( <i>this error is set by a master device only</i> )
	12	Alarm on safety slave 6 (system B) ( <i>this error is set by a master device only</i> )
	13	Error on safety master or local slave (system A)
	14	Error on safety master or local slave (system B)
	15	Safety network alarm, initiated by safety master ( <i>display shows alarm AL-49-15 on each slave, which has not generated an own alarm</i> )

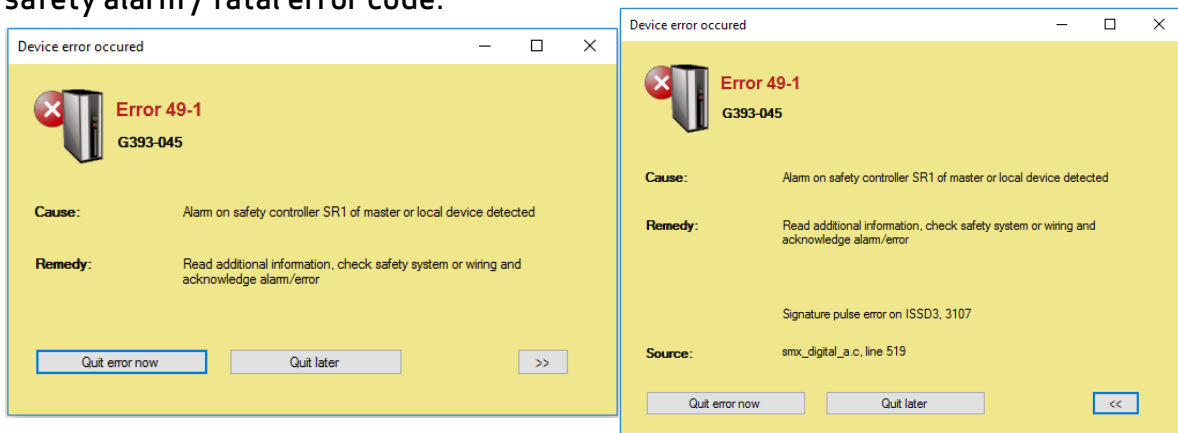
If one of these error codes occurs it will be necessary to have additional information about the safety alarm or safety fatal error.

## 3.2 Information about safety error codes

To get information about the safety error code there are a lot of different possibilities:

- Moog DRIVEADMINISTRATOR popup-window

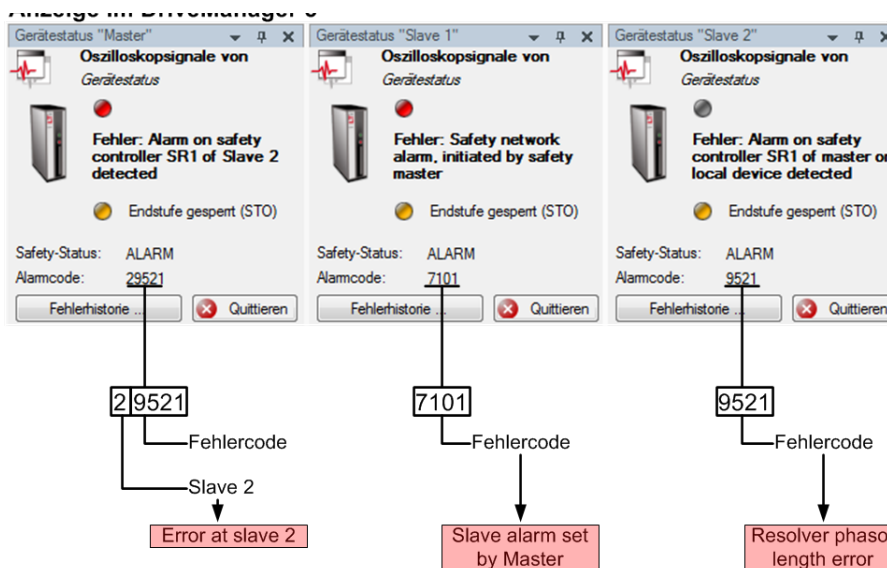
With the marked button this popup window shows more detailed information about a safety alarm / fatal error code.



- Moog DRIVEADMINISTRATOR - device status

Each device shows its own alarm resp. error code by what it is possible to get detailed information.

The example below shows “slave2” detected an error, the master shows a failure code with five letters (the first letter indicates the slave number) and “slave1” shows a subsequent error.



- Parameter 1816 - safety diagnosis info

It's necessary to look at this parameter (at the master device) if a slave device has a fatal error. Otherwise there is no possibility to be able to locate the slave who generates the fatal error.

In the following example slave 3 shows the fatal error 3859 (Sub ID 24).

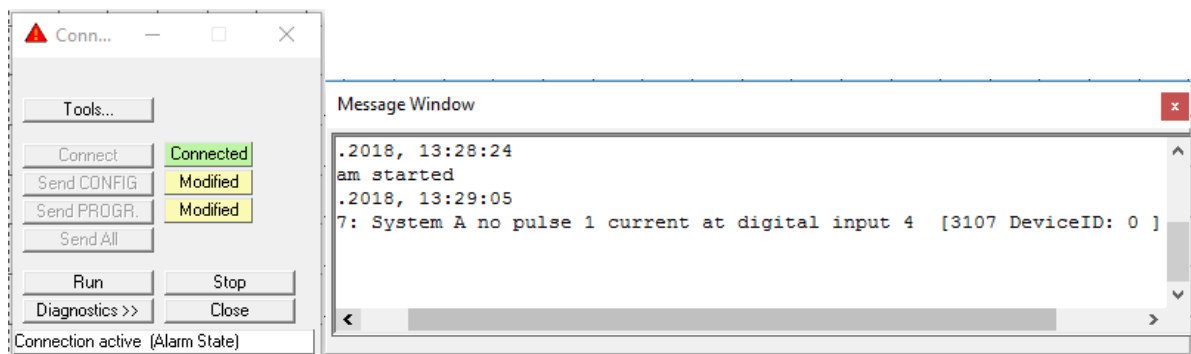
List view of Device status "\_Slave 1"

Back | Drives actual status "\_Slave 1"

Id	Sub id	Name	Value	Unit	Introduction
		Status bits			Drives bit coded actual status
		Load factor			Load factor of drive
	150 0	Numerical status	2		Actual numerical device status
	152 0	Textual status	Switch on disabled		Actual textual device status
	153 0	Fault reset	False		Fault reset command
	1816	FSAFE_Diag			Safety diagnosis info
	1816 0	FSAFE_Diag	RUN		Main safety state
...	...	...	...	...	...
...	1816 21	FSAFE_Diag	1		Configuration data: Factor s
...	1816 22	FSAFE_Diag	0		Scope configuration
...	1816 23	FSAFE_Diag	0		Slave[2]: Error Message
...	1816 24	FSAFE_Diag	0		Slave[3]: Error Message
...	1816 25	FSAFE_Diag	0		Slave[4]: Error Message
...	1816 26	FSAFE_Diag	0		Slave[5]: Error Message
...	1816 27	FSAFE_Diag	0		Slave[6]: Error Message
...	1816 28	FSAFE_Diag	0		Slave[7]: Error Message
...	1816 29	FSAFE_Diag	0		Slave[8]: Error Message

- Safety PLC

With an active connection the Safety PLC shows the status of the safety state machine (in this example "Alarm State"). The message window gives information about the alarm or fatal error code and, if there are shown five digits, with the first digit the slave which generates the error.



- Device display

With help of the two buttons below the device display it is also possible to get information about the alarm / fatal error code. A description how to handle these buttons is integrated at standard documentation.

### 3.3 List of alarm and fatal error codes

The following list shows all possible error / alarm codes and its meaning

(SC1 = safety drive 1 / SC2 = safety drive 2 / Attribute “NoReset” = only a 24V-Reset can quit the error)

SR1	SR2	Type	Attribute	Cause	Remedy
1001	1002	Error		Loaded configuration-data is invalid	Switch OFF / ON the device, if the error occurs again please contact manufacturer.
1003	1004	Error		Processing restart sequence failed	Switch OFF / ON the device, if the error occurs again please contact manufacturer.
1005	1006	Error		Last switch of main not supported by restart sequence	Switch OFF / ON the device, if the error occurs again please contact manufacturer.
1301	1302	Error		Error during initialization of flash	Switch OFF / ON the device, if the error occurs again please contact manufacturer.
1403	1404	Error	NoReset	Configuration error of parameter data	Switch OFF / ON the device, reload config- and program-data - if the error occurs again please contact manufacturer
1405	1406	Error		No valid configuration available	Switch OFF / ON the device, reload config- and program-data - if the error occurs again please contact manufacturer
1407	1408	Error		No valid program available	Switch OFF / ON the device, reload config- and program-data - if the error occurs again please contact manufacturer
1409	1410	Error	NoReset	Configuration error of program data	Switch OFF / ON the device, reload config- and program-data - if the error occurs again please contact manufacturer
1411	1412	Error		No valid configuration available	Switch OFF / ON the device, reload config- and program-data - if the error occurs again please contact manufacturer
1413	1414	Error	NoReset	Configuration error	Switch OFF / ON the device, reload config- and program-data - if the error occurs again please contact manufacturer
1501	1502	Error	NoReset	Invalid firmware detected	Switch OFF / ON the device, if the error occurs again please contact manufacturer.



SR1	SR2	Type	Attribute	Cause	Remedy
1503	1504	Error	NoReset	Invalid production data detected	Switch OFF / ON the device, if the error occurs again please contact manufacturer.
1505	1506	Error		Internal error, transmit of production data failed	Switch OFF / ON the device, if the error occurs again please contact manufacturer.
1507	1508	Error		Firmware not valid for device serial number	Switch OFF / ON the device, if the error occurs again please contact manufacturer.
1601	1602	Error		Range check of device description wrong	Check configuration relating the device, replace if necessary and try to re-upload the configuration. Maybe you have to use a compatible Safety PLC version.
1603	1604	Error		Range check of access data wrong	Try to re-upload the configuration. Maybe you have to use a compatible Safety PLC version.
1605	1606	Error		Range check EMU wrong	Check configuration relating to the EMU function of the different outputs, replace if necessary and try to re-upload the configuration. Maybe you have to use a compatible Safety PLC version.
1607	1608	Error		Range check SCA wrong	Check configuration relating to the different SCA functions, replace if necessary and try to re-upload the configuration. Maybe you have to use a compatible Safety PLC version.
1609	1610	Error		Range check SSX wrong	Check configuration relating to the different SSX functions, replace if necessary and try to re-upload the configuration. Maybe you have to use a compatible Safety PLC version.
1611	1612	Error		Range check SEL wrong	Check configuration relating to the different SEL functions, replace if necessary and try to re-upload the configuration. Maybe you have to use a compatible Safety PLC version.
1613	1614	Error		Range check SLP wrong	Check configuration relating to the different SLP functions, replace if necessary and try to re-upload the configuration. Maybe you have to use a compatible Safety PLC version.

SR1	SR2	Type	Attribute	Cause	Remedy
1615	1616	Error		Range check SOS wrong	Check configuration relating to the different SOS functions, replace if necessary and try to re-upload the configuration. Maybe you have to use a compatible Safety PLC version.
1617	1618	Error		Range check SLS wrong	Check configuration relating to the different SLS functions, replace if necessary and try to re-upload the configuration. Maybe you have to use a compatible Safety PLC version.
1619	1620	Error		Range check SDI wrong	Check configuration relating to the different SDI functions, replace if necessary and try to re-upload the configuration. Maybe you have to use a compatible Safety PLC version.
1621	1622	Error		Range check SLI wrong	Check configuration relating to the different SLI functions, replace if necessary and try to re-upload the configuration. Maybe you have to use a compatible Safety PLC version.
1623	1624	Error		Range check PLC wrong	Recompile the configuration and in case of no error try to re-upload the configuration. Maybe you have to use a compatible Safety PLC version.
1625	1626	Error		Range check shut-off channel wrong	Check configuration relating to the different STO functions, replace if necessary and try to re-upload the configuration. Maybe you have to use a compatible Safety PLC version.
1627	1628	Error		Range check outputs wrong	Check configuration relating to the outputs, replace if necessary and try to re-upload the configuration. Maybe you have to use a compatible Safety PLC version.
1629	1630	Error		Range check digital inputs wrong	Check configuration relating to the inputs, replace if necessary and try to re-upload the configuration. Maybe you have to use a compatible Safety PLC version.
1633	1634	Error		Range check encoder type wrong	Check configured encoder type and try to re-upload the configuration. Maybe you have to use a compatible Safety PLC version.

SR1	SR2	Type	Attribute	Cause	Remedy
1635	1636	Error		Range check encoder processing wrong	Check configuration relating to the encoder parameters and try to re-upload the configuration. Maybe you have to use a compatible Safety PLC version.
1637	1638	Error		Range check encoder position wrong	Check configuration relating to the encoder parameters for position and try to re-upload the configuration. Maybe you have to use a compatible Safety PLC version.
1639	1640	Error		Range check PDM wrong	Check configuration relating to the different PDM functions, replace if necessary and try to re-upload the configuration. Maybe you have to use a compatible Safety PLC version.
1645	1646	Error		Range check axis management wrong	Incompatible Safety PLC version was used to upload the configuration.
1647	1648	Error		Range check expansion modules wrong	Check configuration relating to the expansion modules, replace if necessary and try to re-upload the configuration. Maybe you have to use a compatible Safety PLC version.
1649	1650	Error		Range check PLC timer wrong	Check configuration relating to the timer function blocks, replace if necessary and try to re-upload the configuration. Maybe you have to use a compatible Safety PLC version.
1651	1652	Error		Range check system wrong	Try to re-upload the configuration. Maybe you have to use a compatible Safety PLC version.
1653	1654	Error		Range check connection table wrong	Try to re-upload the configuration. Maybe you have to use a compatible Safety PLC version.
1657	1658	Error		Range check diagnosis wrong	Make sure the uploaded configuration match with the configuration for diagnosis.
1701	1702	Error		Internal error type 2	Switch OFF / ON the device, if the error occurs again please contact manufacturer.
1703	1704	Error		Internal error type 2	Switch OFF / ON the device, if the error occurs again please contact manufacturer.

SR1	SR2	Type	Attribute	Cause	Remedy
2001	2002	Error		Cross communication CRC error	Switch OFF / ON the device, if the error occurs again please contact manufacturer.
2003	2004	Error		Cross communication time out	Switch OFF / ON the device, if the error occurs again please contact manufacturer.
2005	2006	Error		Cross communication sequence error	Switch OFF / ON the device, if the error occurs again please contact manufacturer.
2007	2008	Error		Cross communication timing error	Switch OFF / ON the device, if the error occurs again please contact manufacturer.
3001	3002	Error		Internal error type 2	Switch OFF / ON the device, if the error occurs again please contact manufacturer.
3031	3032	Alarm		Pulse1 plausibility error on expansion input EEx.1	Check configuration of digital input as per project planning and wiring diagram - Check wiring
3033	3034	Alarm		Pulse2 plausibility error on expansion input EEx.1	Check configuration of digital input as per project planning and wiring diagram - Check wiring
3035	3036	Alarm		Wrong 24V signal (not continuous) at EEx.1	Check wiring resp. voltage at digital input (whether Pulse1 or Pulse2 connected)
3037	3038	Alarm		Pulse1 plausibility error on expansion input EEx.2	Check configuration of digital input as per project planning and wiring diagram - Check wiring
3039	3040	Alarm		Pulse2 plausibility error on expansion input EEx.2	Check configuration of digital input as per project planning and wiring diagram - Check wiring
3041	3042	Alarm		Wrong 24V signal (not continuous) at EEx.2	Check wiring resp. voltage at digital input (whether Pulse1 or Pulse2 connected)
3043	3044	Alarm		Pulse1 plausibility error on expansion input EEx.3	Check configuration of digital input as per project planning and wiring diagram - Check wiring
3045	3046	Alarm		Pulse2 plausibility error on expansion input EEx.3	Check configuration of digital input as per project planning and wiring diagram - Check wiring

SR1	SR2	Type	Attribute	Cause	Remedy
3047	3048	Alarm		Wrong 24V signal at EAEEx.3	Check wiring resp. voltage at digital input (whether Pulse1 or Pulse2 connected)
3049	3050	Alarm		Pulse1 plausibility error on expansion input EAEEx.4	Check configuration of digital input as per project planning and wiring diagram - Check wiring
3051	3052	Alarm		Pulse2 plausibility error on expansion input EAEEx.4	Check configuration of digital input as per project planning and wiring diagram - Check wiring
3053	3054	Alarm		Wrong 24V signal at EAEEx.4	Check wiring resp. voltage at digital input (whether Pulse1 or Pulse2 connected)
3055	3056	Alarm		Pulse1 plausibility error on expansion input EAEEx.5	Check configuration of digital input as per project planning and wiring diagram - Check wiring
3057	3058	Alarm		Pulse2 plausibility error on expansion input EAEEx.5	Check configuration of digital input as per project planning and wiring diagram - Check wiring
3059	3060	Alarm		Wrong 24V signal at EAEEx.5	Check wiring resp. voltage at digital input (whether Pulse1 or Pulse2 connected)
3061	3062	Alarm		Pulse1 plausibility error on expansion input EAEEx.6	Check configuration of digital input as per project planning and wiring diagram - Check wiring
3063	3064	Alarm		Pulse2 plausibility error on expansion input EAEEx.6	Check configuration of digital input as per project planning and wiring diagram - Check wiring
3065	3066	Alarm		Wrong 24V signal at EAEEx.6	Check wiring resp. voltage at digital input (whether Pulse1 or Pulse2 connected)
3067	3068	Alarm		Pulse1 plausibility error on expansion input EAEEx.7	Check configuration of digital input as per project planning and wiring diagram - Check wiring
3069	3070	Alarm		Pulse2 plausibility error on expansion input EAEEx.7	Check configuration of digital input as per project planning and wiring diagram - Check wiring
3071	3072	Alarm		Wrong 24V signal at EAEEx.7	Check wiring resp. voltage at digital input (whether Pulse1 or Pulse2 connected)

SR1	SR2	Type	Attribute	Cause	Remedy
3073	3074	Alarm		Pulse1 plausibility error on expansion input EAEEx.8	Check configuration of digital input as per project planning and wiring diagram - Check wiring
3075	3076	Alarm		Pulse2 plausibility error on expansion input EAEEx.8	Check configuration of digital input as per project planning and wiring diagram - Check wiring
3077	3078	Alarm		Wrong 24V signal at EAEEx.8	Check wiring resp. voltage at digital input (whether Pulse1 or Pulse2 connected)
3079	3080	Alarm		Pulse1 plausibility error on expansion input EAEEx.9	Check configuration of digital input as per project planning and wiring diagram - Check wiring
3081	3082	Alarm		Pulse2 plausibility error on expansion input EAEEx.9	Check configuration of digital input as per project planning and wiring diagram - Check wiring
3083	3084	Alarm		Wrong 24V signal at EAEEx.9	Check wiring resp. voltage at digital input (whether Pulse1 or Pulse2 connected)
3085	3086	Alarm		Pulse1 plausibility error on expansion input EAEEx.10	Check configuration of digital input as per project planning and wiring diagram - Check wiring
3087	3888	Alarm		Pulse2 plausibility error on expansion input EAEEx.10	Check configuration of digital input as per project planning and wiring diagram - Check wiring
3089	3090	Alarm		Wrong 24V signal at EAEEx.10	Check wiring resp. voltage at digital input (whether Pulse1 or Pulse2 connected)
3101	3102	Alarm		Signature pulse error on ISSD0 or Pulse1 plausibility error at expansion input DI1	Check configuration of digital input as per project planning and wiring diagram - Check wiring
3103	3104	Alarm		Signature pulse error on ISSD1 or Pulse1 plausibility error at expansion input DI2	Check configuration of digital input as per project planning and wiring diagram - Check wiring
3105	3106	Alarm		Signature pulse error on ISSD2 or Pulse1 plausibility error at expansion input DI3	Check configuration of digital input as per project planning and wiring diagram - Check wiring
3107	3108	Alarm		Signature pulse error on ISSD3 or Pulse1 plausibility error at expansion input DI4	Check configuration of digital input as per project planning and wiring diagram - Check wiring

SR1	SR2	Type	Attribute	Cause	Remedy
3109	3110	Error		Pass1 error on digital inputs - difference in redundant systems	Switch OFF / ON the device, if the error occurs again please contact manufacturer.
		Alarm		Pulse1 plausibility error at expansion input DI5	Check configuration of digital input as per project planning and wiring diagram - Check wiring
3111	3112	Alarm		Pulse1 plausibility error at expansion input DI6	Check configuration of digital input as per project planning and wiring diagram - Check wiring
3113	3114	Alarm		Pulse1 plausibility error at expansion input DI7	Check configuration of digital input as per project planning and wiring diagram - Check wiring
3115	3116	Alarm		Pulse1 plausibility error at expansion input DI8	Check configuration of digital input as per project planning and wiring diagram - Check wiring
3117	3118	Alarm		Pulse2 plausibility error at expansion input DI1	Check configuration of digital input as per project planning and wiring diagram - Check wiring
3119	3120	Error		Internal error type 2	Switch OFF / ON the device, if the error occurs again please contact manufacturer.
		Alarm		Pulse2 plausibility error at expansion input DI2	Check configuration of digital input as per project planning and wiring diagram - Check wiring
3121	3122	Alarm		Pulse2 plausibility error at expansion input DI3	Check configuration of digital input as per project planning and wiring diagram - Check wiring
3123	3124	Alarm		Pulse2 plausibility error at expansion input DI4	Check configuration of digital input as per project planning and wiring diagram - Check wiring
3125	3126	Alarm		Pulse2 plausibility error at expansion input DI5	Check configuration of digital input as per project planning and wiring diagram - Check wiring
3127	3128	Alarm		Pulse2 plausibility error at expansion input DI6	Check configuration of digital input as per project planning and wiring diagram - Check wiring
3129	3130	Alarm		Pulse2 plausibility error at expansion input DI7	Check configuration of digital input as per project planning and wiring diagram - Check wiring

SR1	SR2	Type	Attribute	Cause	Remedy
3131	3132	Alarm		Pulse2 plausibility error at expansion input DI8	Check configuration of digital input as per project planning and wiring diagram - Check wiring
3133	3134	Alarm		Pulse1 plausibility error at expansion input DI9	Check configuration of digital input as per project planning and wiring diagram - Check wiring
3135	3136	Alarm		Pulse1 plausibility error at expansion input DI10	Check configuration of digital input as per project planning and wiring diagram - Check wiring
3137	3138	Alarm		Pulse1 plausibility error at expansion input DI11	Check configuration of digital input as per project planning and wiring diagram - Check wiring
3139	3140	Alarm		Pulse1 plausibility error at expansion input DI12	Check configuration of digital input as per project planning and wiring diagram - Check wiring
3147	3148	Alarm		Pulse2 plausibility error at expansion input DI9	Check configuration of digital input as per project planning and wiring diagram - Check wiring
3149	3150	Alarm		Pulse2 plausibility error at expansion input DI10	Check configuration of digital input as per project planning and wiring diagram - Check wiring
3151	3152	Alarm		Pulse2 plausibility error at expansion input DI11	Check configuration of digital input as per project planning and wiring diagram - Check wiring
3153	3154	Alarm		Pulse2 plausibility error at expansion input DI12	Check configuration of digital input as per project planning and wiring diagram - Check wiring
3159	3160	Alarm		Wrong 24V signal (not continuous) at expansion input DI1	Check wiring resp. voltage at digital input (whether Pulse1 or Pulse2 connected)
3161	3162	Alarm		Wrong 24V signal (not continuous) at expansion input DI2	Check wiring resp. voltage at digital input (whether Pulse1 or Pulse2 connected)
3163	3164	Alarm		Wrong 24V signal (not continuous) at expansion input DI3	Check wiring resp. voltage at digital input (whether Pulse1 or Pulse2 connected)
3165	3166	Alarm		Wrong 24V signal (not continuous) at expansion input DI4	Check wiring resp. voltage at digital input (whether Pulse1 or Pulse2 connected)



SR1	SR2	Type	Attribute	Cause	Remedy
3167	3168	Alarm		Wrong 24V signal (not continuous) at expansion input DI5	Check wiring resp. voltage at digital input (whether Pulse1 or Pulse2 connected)
3169	3170	Alarm		Wrong 24V signal (not continuous) at expansion input DI6	Check wiring resp. voltage at digital input (whether Pulse1 or Pulse2 connected)
3171	3172	Alarm		Wrong 24V signal (not continuous) at expansion input DI7	Check wiring resp. voltage at digital input (whether Pulse1 or Pulse2 connected)
3173	3174	Alarm		Wrong 24V signal (not continuous) at expansion input DI8	Check wiring resp. voltage at digital input (whether Pulse1 or Pulse2 connected)
3175	3176	Alarm		Wrong 24V signal (not continuous) at expansion input DI9	Check wiring resp. voltage at digital input (whether Pulse1 or Pulse2 connected)
3177	3178	Alarm		Wrong 24V signal (not continuous) at expansion input DI10	Check wiring resp. voltage at digital input (whether Pulse1 or Pulse2 connected)
3179	3180	Alarm		Wrong 24V signal (not continuous) at expansion input DI11	Check wiring resp. voltage at digital input (whether Pulse1 or Pulse2 connected)
3181	3182	Alarm		Wrong 24V signal (not continuous) at expansion input DI12	Check wiring resp. voltage at digital input (whether Pulse1 or Pulse2 connected)
3201	3202	Error		Internal error type 2	Switch OFF / ON the device, if the error occurs again please contact manufacturer.
3203	3204	Error		Internal error type 2	Switch OFF / ON the device, if the error occurs again please contact manufacturer.
3205	3206	Error		Internal error type 2	Switch OFF / ON the device, if the error occurs again please contact manufacturer.
3207	3208	Error		Internal error type 2	Switch OFF / ON the device, if the error occurs again please contact manufacturer.

SR1	SR2	Type	Attribute	Cause	Remedy
3209	3210	Error		Internal error type 2	Switch OFF / ON the device, if the error occurs again please contact manufacturer.
3211	3212	Error		Internal error type 2	Switch OFF / ON the device, if the error occurs again please contact manufacturer.
3213	3214	Error		Internal error type 2	Switch OFF / ON the device, if the error occurs again please contact manufacturer.
3215	3216	Error		Internal error type 2	Switch OFF / ON the device, if the error occurs again please contact manufacturer.
3217	3218	Error		Internal error type 2	Switch OFF / ON the device, if the error occurs again please contact manufacturer.
3219	3220	Error		Internal error type 2	Switch OFF / ON the device, if the error occurs again please contact manufacturer.
3221	3222	Error		Internal error type 2	Switch OFF / ON the device, if the error occurs again please contact manufacturer.
3223	3224	Error		Internal error type 2	Switch OFF / ON the device, if the error occurs again please contact manufacturer.
3225	3226	Error		Internal error type 2	Switch OFF / ON the device, if the error occurs again please contact manufacturer.
3227	3228	Error	NoReset	Internal error type 2	Switch OFF / ON the device, if the error occurs again please contact manufacturer.
3301	3302	Alarm		The current difference between encoder speeds of the 1st axis is greater than configured	Check the system theory again with the data in the encoder configuration and the speed sensor Use SCOPE function to equalize speed signals
3303	3304	Alarm		The current difference between encoder positions of the 1st axis is greater than configured	Check the system theory again with the data in the encoder configuration and the position signal Check correct wiring of encoder connector. Use SCOPE function to equalize position signals

SR1	SR2	Type	Attribute	Cause	Remedy
3305	3306	Error		Internal error type 1	Switch OFF / ON the device, if the error occurs again please contact manufacturer.
3307	3308	Alarm		The current position of the 1st axis exceeds the configured range	Check the system theory again with the data in the encoder configuration Check position signal and correct offset as necessary Use SCOPE function to read out position and set in relation to configured values
3309	3310	Alarm		The current speed of the 1st axis exceeds the configured max. value	The drive moves outside the permissible and configured speed range - check configuration Use SCOPE to analyze speed characteristic
3311	3312	Alarm		The current acceleration of the 1st axis exceeds the configured max. value	The drive has exceeded the permissible acceleration range Check configuration of maximum speed Use SCOPE to analyze speed/acceleration characteristic
3313	3314	Error		Error of the SSI-encoder X7 or X8 - value jump in one cycle is too large	Check encoder configuration and cabling
3315	3316	Error		Internal error type 1	Switch OFF / ON the device, if the error occurs again please contact manufacturer.
3317	3318	Error		Internal error type 1	Switch OFF / ON the device, if the error occurs again please contact manufacturer.
3321	3322	Alarm		The current difference between encoder speeds of the 2nd axis is greater than configured	Check the system theory again with the data in the encoder configuration and the speed sensor Use SCOPE function to equalize speed signals
3323	3324	Alarm		The current difference between encoder positions of the 2nd axis is greater than configured	Check the system theory again with the data in the encoder configuration and the position signal Check correct wiring of encoder connector. Use SCOPE function to equalize position signals

SR1	SR2	Type	Attribute	Cause	Remedy
3325	3326	Error		Internal error type 1	Switch OFF / ON the device, if the error occurs again please contact manufacturer.
3327	3328	Alarm		The current position of 2nd axis exceeds the configured range	Check the system theory again with the data in the encoder configuration Check position signal and correct offset as necessary Use SCOPE function to read out position and set in relation to configured values
3329	3330	Alarm		The current speed of the 2nd axis exceeds the configured maximum value	The drive moves outside the permissible and configured speed range - check configuration Use SCOPE to analyze speed characteristic
3331	3332	Alarm		The current acceleration of the 2nd axis exceeds the configured maximum value	The drive has exceeded the permissible acceleration range Check configuration of maximum speed Use SCOPE to analyze speed/acceleration characteristic
3333	3334	Error		Internal error type 1	Switch OFF / ON the device, if the error occurs again please contact manufacturer.
3335	3336	Error		Internal error type 1	Switch OFF / ON the device, if the error occurs again please contact manufacturer.
3337	3338	Error		Internal error type 1	Switch OFF / ON the device, if the error occurs again please contact manufacturer.
3501	3502	Error		Wrong SSI parameter	Check configuration of SSI parameters and wiring of SSI encoder
3503	3504	Error		No SSI data received on connector X7	Check configuration of SSI parameters and wiring of SSI encoder
3507	3508	Error		Wrong SSI data received on connector X7	Check configuration of SSI parameters and wiring of SSI encoder
3509	3510	Error		No life bit received on connector X7	Check configuration of SSI parameters and wiring of SSI encoder
3511	3512	Error		Wrong SSI status received on connector X7	Check configuration of SSI parameters and wiring of SSI encoder
3601	3602	Error		Error during output test OSSD02 (SR1) or OSSD00 (SR2)	Check wiring regarding short-circuits

SR1	SR2	Type	Attribute	Cause	Remedy
3603	3604	Error		Error during output test OSSD03 (SR1) or OSSD01 (SR2)	Check wiring regarding short-circuits
3605	3606	Error		Error during output test OSSD02 (SR1) or OSSD00 (SR2)	Check wiring regarding short-circuits
3607	3608	Error		Error during output test OSSD03 (SR1) or OSSD01 (SR2)	Check wiring regarding short-circuits
3609	3610	Error		Internal error type 2	Switch OFF / ON the device, if the error occurs again please contact manufacturer.
3611	3612	Error		Wrong expected state of output OSSD02 (SR1) or OSSD00 (SR2)	Check wiring regarding short-circuits Without dynamic output test it has to work
3613	3614	Error		Wrong expected state of output OSSD03 (SR1) or OSSD01 (SR2)	Check wiring regarding short-circuits Without dynamic output test it has to work
3615	3616	Error		Master switch error of output OSSD02 (SR1) or OSSD00 (SR2)	Switch OFF / ON the device, if the error occurs again please contact manufacturer.
3617	3618	Error		Master switch error of output OSSD03 (SR1) or OSSD01 (SR2)	Switch OFF / ON the device, if the error occurs again please contact manufacturer.
3619	3620	Error		Initialization error - wrong output parameter	Check configuration of the outputs and reload config- and program-data
3621	3622	Error		Internal error type 2	Switch OFF / ON the device, if the error occurs again please contact manufacturer.
3623	3624	Error		Internal error type 2	Switch OFF / ON the device, if the error occurs again please contact manufacturer.
3701	3702	Error		Process image error	Switch OFF / ON the device, if the error occurs again please contact manufacturer.
3703	3704	Error		Process image error 2	Switch OFF / ON the device, if the error occurs again please contact manufacturer.

SR1	SR2	Type	Attribute	Cause	Remedy
3801	3802	Alarm		Wrong switching of output EAAx.1 (short with "24V" or "0V")	Check wiring and switch OFF / ON the device, if the error occurs again please contact manufacturer.
3803	3804	Alarm		Wrong switching of output EAAx.2 (short with "24V" or "0V")	Check wiring and switch OFF / ON the device, if the error occurs again please contact manufacturer.
3805	3806	Alarm		Wrong switching of output EAAx.3 (short with "24V" or "0V")	Check wiring and switch OFF / ON the device, if the error occurs again please contact manufacturer.
3807	3808	Alarm		Wrong switching of output EAAx.4 (short with "24V" or "0V")	Check wiring and switch OFF / ON the device, if the error occurs again please contact manufacturer.
3809	3810	Alarm		Wrong switching of output EAAx.5 (short with "24V" or "0V")	Check wiring and switch OFF / ON the device, if the error occurs again please contact manufacturer.
3811	3812	Alarm		Wrong switching of output EAAx.6 (short with "24V" or "0V")	Check wiring and switch OFF / ON the device, if the error occurs again please contact manufacturer.
3813	3814	Alarm		Wrong switching of output EAAx.7 (short with "24V" or "0V")	Check wiring and switch OFF / ON the device, if the error occurs again please contact manufacturer.
3815	3816	Alarm		Wrong switching of output EAAx.8 (short with "24V" or "0V")	Check wiring and switch OFF / ON the device, if the error occurs again please contact manufacturer.
3817	3818	Alarm		Wrong switching of output EAAx.9 (short with "24V" or "0V")	Check wiring and switch OFF / ON the device, if the error occurs again please contact manufacturer.
3819	3820	Alarm		Wrong switching of output EAAx.10 (short with "24V" or "0V")	Check wiring and switch OFF / ON the device, if the error occurs again please contact manufacturer.
3841	3842	Error	NoReset	Wrong internal testing (OSSD) of output EAAx.1	Switch OFF / ON the device, if the error occurs again please contact manufacturer.
3843	3844	Error	NoReset	Wrong internal testing (OSSD) of output EAAx.2	Switch OFF / ON the device, if the error occurs again please contact manufacturer.

SR1	SR2	Type	Attribute	Cause	Remedy
3845	3846	Error	NoReset	Wrong internal testing (OSSD) of output EAAx.3	Switch OFF / ON the device, if the error occurs again please contact manufacturer.
3847	3848	Error	NoReset	Wrong internal testing (OSSD) of output EAAx.4	Switch OFF / ON the device, if the error occurs again please contact manufacturer.
3849	3850	Error	NoReset	Wrong internal testing (OSSD) of output EAAx.5	Switch OFF / ON the device, if the error occurs again please contact manufacturer.
3851	3852	Error	NoReset	Wrong internal testing (OSSD) of output EAAx.6	Switch OFF / ON the device, if the error occurs again please contact manufacturer.
3853	3854	Error	NoReset	Wrong internal testing (OSSD) of output EAAx.7	Switch OFF / ON the device, if the error occurs again please contact manufacturer.
3855	3856	Error	NoReset	Wrong internal testing (OSSD) of output EAAx.8	Switch OFF / ON the device, if the error occurs again please contact manufacturer.
3857	3858	Error	NoReset	Wrong internal testing (OSSD) of output EAAx.9	Switch OFF / ON the device, if the error occurs again please contact manufacturer.
3859	3860	Error	NoReset	Wrong internal testing (OSSD) of output EAAx.10	Switch OFF / ON the device, if the error occurs again please contact manufacturer.
3871	3872	Error	NoReset	Wrong internal dynamic testing of output group EAAx.1 to EAAx.6	Switch OFF / ON the device, if the error occurs again please contact manufacturer.
3873	3874	Error	NoReset	Wrong internal dynamic testing of output group EAAx.7 to EAAx.10	Switch OFF / ON the device, if the error occurs again please contact manufacturer.
3891	3892	Error	NoReset	Wrong internal static testing of output group EAAx.1 to EAAx.6	Switch OFF / ON the device, if the error occurs again please contact manufacturer.
3892	3894	Error	NoReset	Wrong internal static testing of output group EAAx.7 to EAAx.10	Switch OFF / ON the device, if the error occurs again please contact manufacturer.
4001	4002	Error		Both inputs of SDI1 at master device active	Disable the inputs of SDI1 (1. axis) and reset the function block. Make sure to enable only one input simultaneously.

SR1	SR2	Type	Attribute	Cause	Remedy
4003	4004	Error		Both inputs of SDI2 at master device active	Disable the inputs of SDI2 (2. axis) and reset the function block. Make sure to enable only one input simultaneously.
4005	4006	Error		Both inputs of SDI1 at 1 <sup>st</sup> slave device active	Disable the inputs of SDI1 (1. axis) and reset the function block. Make sure to enable only one input simultaneously.
4007	4008	Error		Both inputs of SDI2 at 1 <sup>st</sup> slave device active	Disable the inputs of SDI2 (2. axis) and reset the function block. Make sure to enable only one input simultaneously.
4009	4010	Error		Both inputs of SDI1 at 2 <sup>nd</sup> slave device active	Disable the inputs of SDI1 (1. axis) and reset the function block. Make sure to enable only one input simultaneously.
4011	4012	Error		Both inputs of SDI2 at 2 <sup>nd</sup> slave device active	Disable the inputs of SDI2 (2. axis) and reset the function block. Make sure to enable only one input simultaneously.
4013	4014	Error		Both inputs of SDI1 at 3 <sup>rd</sup> slave device active	Disable the inputs of SDI1 (1. axis) and reset the function block. Make sure to enable only one input simultaneously.
4015	4016	Error		Both inputs of SDI2 at 3 <sup>rd</sup> slave device active	Disable the inputs of SDI2 (2. axis) and reset the function block. Make sure to enable only one input simultaneously.
4017	4018	Error		Both inputs of SDI1 at 4 <sup>th</sup> slave device active	Disable the inputs of SDI1 (1. axis) and reset the function block. Make sure to enable only one input simultaneously.
4019	4020	Error		Both inputs of SDI2 at 4 <sup>th</sup> slave device active	Disable the inputs of SDI2 (2. axis) and reset the function block. Make sure to enable only one input simultaneously.
4021	4022	Error		Both inputs of SDI1 at 5 <sup>th</sup> slave device active	Disable the inputs of SDI1 (1. axis) and reset the function block. Make sure to enable only one input simultaneously.
4023	4024	Error		Both inputs of SDI2 at 5 <sup>th</sup> slave device active	Disable the inputs of SDI2 (2. axis) and reset the function block. Make sure to enable only one input simultaneously.
4401	4402	Alarm		EMU1 error at slave device	Check configuration relating to the EMU monitoring of the output, check wiring and the logical function of the loop back circuit.



SR1	SR2	Type	Attribute	Cause	Remedy
4403	4404	Alarm		EMU2 error at slave device	Check configuration relating to the EMU monitoring of the output, check wiring and the logical function of the loop back circuit.
4501	4502	Error		Wrong calculation of SSX deceleration ramp	Check configuration relating to the SSX function block, replace if necessary and try to re-upload the configuration.
4503	4504	Error		Wrong calculation of SSX limit curve	Check configuration relating to the SSX function block, replace if necessary and try to re-upload the configuration.
4601	-	Error		Both inputs of SLP active (independent which device)	Disable the inputs of SLP and reset the function block. Make sure to enable only one input simultaneously.
4624	4625	Error		Internal error type 1	Switch OFF / ON the device, if the error occurs again please contact manufacturer.
4648	4649	Error		Internal error type 1	Switch OFF / ON the device, if the error occurs again please contact manufacturer.
4672	4673	Error		Internal error type 1	Switch OFF / ON the device, if the error occurs again please contact manufacturer.
4901	4902	Error		Both inputs of SLI1 at master device active	Disable the inputs of SLI1 (1. axis) and reset the function block. Make sure to enable only one input simultaneously.
4903	4904	Error		Both inputs of SLI2 at master device active	Disable the inputs of SLI2 (2. axis) and reset the function block. Make sure to enable only one input simultaneously.
4905	4906	Error		Both inputs of SLI1 at 1 <sup>st</sup> slave device active	Disable the inputs of SLI1 (1. axis) and reset the function block. Make sure to enable only one input simultaneously.
4907	4908	Error		Both inputs of SLI2 at 1 <sup>st</sup> slave device active	Disable the inputs of SLI2 (2. axis) and reset the function block. Make sure to enable only one input simultaneously.
4909	4910	Error		Both inputs of SLI1 at 2 <sup>nd</sup> slave device active	Disable the inputs of SLI1 (1. axis) and reset the function block. Make sure to enable only one input simultaneously.

SR1	SR2	Type	Attribute	Cause	Remedy
4911	4912	Error		Both inputs of SLI2 at 2 <sup>nd</sup> slave device active	Disable the inputs of SLI2 (2. axis) and reset the function block. Make sure to enable only one input simultaneously.
4913	4914	Error		Both inputs of SLI1 at 3 <sup>rd</sup> slave device active	Disable the inputs of SLI1 (1. axis) and reset the function block. Make sure to enable only one input simultaneously.
4915	4916	Error		Both inputs of SLI2 at 3 <sup>rd</sup> slave device active	Disable the inputs of SLI2 (2. axis) and reset the function block. Make sure to enable only one input simultaneously.
4917	4918	Error		Both inputs of SLI1 at 4 <sup>th</sup> slave device active	Disable the inputs of SLI1 (1. axis) and reset the function block. Make sure to enable only one input simultaneously.
4919	4920	Error		Both inputs of SLI2 at 4 <sup>th</sup> slave device active	Disable the inputs of SLI2 (2. axis) and reset the function block. Make sure to enable only one input simultaneously.
4921	4922	Error		Both inputs of SLI1 at 5 <sup>th</sup> slave device active	Disable the inputs of SLI1 (1. axis) and reset the function block. Make sure to enable only one input simultaneously.
4923	4924	Error		Both inputs of SLI2 at 5 <sup>th</sup> slave device active	Disable the inputs of SLI2 (2. axis) and reset the function block. Make sure to enable only one input simultaneously.
6701	-	Error		Input element with time monitoring wrong (independent which device)	Check configuration relating to an input with time monitoring, replace if necessary and try to re-upload the configuration. Check wiring of this input.
6703	6704	Error		Two-handed control element with time monitoring wrong	Check configuration relating to a two-handed control element with time monitoring, replace if necessary and try to re-upload the configuration. Check wiring of the two-handed control element.
6705	6706	Error		Internal error type 1	Switch OFF / ON the device, if the error occurs again please contact manufacturer.
6801	6802	Error		Not valid PLC opcode	Switch OFF / ON the device, if the error occurs again please contact manufacturer.

SR1	SR2	Type	Attribute	Cause	Remedy
6803	6804	Error		PLC process image pointer error	Switch OFF / ON the device, if the error occurs again please contact manufacturer.
6805	6806	Error		PLC pointer error	Switch OFF / ON the device, if the error occurs again please contact manufacturer.
6807	6808	Error		PLC timer overflow	Switch OFF / ON the device, if the error occurs again please contact manufacturer.
6809	6810	Error		PLC CRC error	Switch OFF / ON the device, if the error occurs again please contact manufacturer.
6811	6812	Error		PLC macro error	Switch OFF / ON the device, if the error occurs again please contact manufacturer.
6813	6814	Error		PLC kernal error	Switch OFF / ON the device, if the error occurs again please contact manufacturer.
7101	7102	Alarm		Slave alarm set by master	Other device inside the network has an alarm - the master sets all other slave devices to the alarm 7101/7102
7103	7104	Error		Internal error type 1	Switch OFF / ON the device, if the error occurs again please contact manufacturer.
8201	8202	Error		Internal error type 2	Switch OFF / ON the device, if the error occurs again please contact manufacturer.
8203	8204	Error		Internal error type 2	Switch OFF / ON the device, if the error occurs again please contact manufacturer.
8205	8206	Error		Internal error type 2	Switch OFF / ON the device, if the error occurs again please contact manufacturer.
8207	8208	Error		Internal error type 2	Switch OFF / ON the device, if the error occurs again please contact manufacturer.
8209	8210	Error		Internal error type 2	Switch OFF / ON the device, if the error occurs again please contact manufacturer.

SR1	SR2	Type	Attribute	Cause	Remedy
8223	8224	Error		Internal error type 2	Switch OFF / ON the device, if the error occurs again please contact manufacturer.
8225	8226	Error		Internal error type 2	Switch OFF / ON the device, if the error occurs again please contact manufacturer.
8227	8228	Error		Internal error type 1	Switch OFF / ON the device, if the error occurs again please contact manufacturer.
9001	9002	Error		Selftest error	Switch OFF / ON the device, if the error occurs again please contact manufacturer.
9007	9008	Error		RAM test error	Switch OFF / ON the device, if the error occurs again please contact manufacturer.
9009	9010	Error		ROM test error	Switch OFF / ON the device, if the error occurs again please contact manufacturer.
9011	9012	Error		Stack pointer error	Switch OFF / ON the device, if the error occurs again please contact manufacturer.
9013	9014	Error		FRAM error	Switch OFF / ON the device, if the error occurs again please contact manufacturer.
9015	9016	Error		RAM write/read error	Switch OFF / ON the device, if the error occurs again please contact manufacturer.
9017	9018	Error		Register error	Switch OFF / ON the device, if the error occurs again please contact manufacturer.
9021	9022	Error		Soft error	Switch OFF / ON the device, if the error occurs again please contact manufacturer.
9051	9052	Error		Internal error type 1	Switch OFF / ON the device, if the error occurs again please contact manufacturer.
9101	9102	Error		SDDC signature error	Switch OFF / ON the device, if the error occurs again please contact manufacturer.

SR1	SR2	Type	Attribute	Cause	Remedy
9103	9104	Error		SDDC network error	Switch OFF / ON the device, if the error occurs again please contact manufacturer.
9105	9106	Error		SDDC pointer error	Switch OFF / ON the device, if the error occurs again please contact manufacturer.
9501	9502	Error		Communication to non-safe CPU lost	Capacity utilization of the drive is probably to high Try to disable not needed drive functions like PLC, control functions or something like that.
9503	9504	Error		Communication to non-safe CPU invalid (receive message)	Capacity utilization of the drive is probably to high Try to disable not needed drive functions like PLC, control functions or something like that.
9505	9506	Error		Communication to non-safe CPU invalid (transmit message)	Capacity utilization of the drive is probably to high Try to disable not needed drive functions like PLC, control functions or something like that.
9507	9508	Error		Communication to non-safe CPU invalid (setup message)	Capacity utilization of the drive is probably to high Try to disable not needed drive functions like iPLC, control functions or something like that.
9521	9522	Alarm		Resolver phasor length error	Check wiring and amplitude of the resolver signal.
9523	9524	Error		Resolver phase error	Check wiring and phase of the resolver signal.
9525	9526	Error		Resolver phase diagnosis error (Hardware)	Switch OFF / ON the device, if the error occurs again please contact manufacturer.
9527	9528	Error		Resolver excitation frequency error (Hardware)	Switch OFF / ON the device, if the error occurs again please contact manufacturer.
9529	9530	Error		Internal error type 2	Switch OFF / ON the device, if the error occurs again please contact manufacturer.
9531	9532	Error		Internal error type 2	Switch OFF / ON the device, if the error occurs again please contact manufacturer.

SR1	SR2	Type	Attribute	Cause	Remedy
9541	9542	Error		Internal error type 2	Switch OFF / ON the device, if the error occurs again please contact manufacturer.
9543	9544	Error		Internal error type 2	Switch OFF / ON the device, if the error occurs again please contact manufacturer.
9545	9546	Error		Internal error type 2	Switch OFF / ON the device, if the error occurs again please contact manufacturer.
9547	9548	Error		Internal error type 2	Switch OFF / ON the device, if the error occurs again please contact manufacturer.
9549	9550	Error		Internal error type 2	Switch OFF / ON the device, if the error occurs again please contact manufacturer.
9551	9552	Error		Internal error type 2	Switch OFF / ON the device, if the error occurs again please contact manufacturer.
9553	9554	Error		Internal error type 2	Switch OFF / ON the device, if the error occurs again please contact manufacturer.
9555	9556	Error		Internal error type 2	Switch OFF / ON the device, if the error occurs again please contact manufacturer.
9561	9562	Error		Internal error type 2	Switch OFF / ON the device, if the error occurs again please contact manufacturer.
9563	9564	Error		Internal error type 2	Switch OFF / ON the device, if the error occurs again please contact manufacturer.
9565	9566	Error		Internal error type 2	Switch OFF / ON the device, if the error occurs again please contact manufacturer.
9567	9568	Error		Internal error type 2	Switch OFF / ON the device, if the error occurs again please contact manufacturer.
9581	9582	Error		Internal error type 2	Switch OFF / ON the device, if the error occurs again please contact manufacturer.

SR1	SR2	Type	Attribute	Cause	Remedy
9583	9584	Error		Internal error type 2	Switch OFF / ON the device, if the error occurs again please contact manufacturer.
9585	9586	Error		Internal error type 2	Switch OFF / ON the device, if the error occurs again please contact manufacturer.
9587	9588	Error		Internal error type 2	Switch OFF / ON the device, if the error occurs again please contact manufacturer.
9589	9590	Alarm		TTL encoder: level error on connector X7	Check supply voltage and wiring
9591	9592	Alarm		TTL encoder: level error on connector X8	Check supply voltage and wiring
9593	9594	Error		SinCos encoder: phasor length error on connector X7	Amplitude is out of range - check wiring and connection
9595	9596	Error		SinCos encoder: phasor length error on connector X8	Amplitude is out of range - check wiring and connection
9597	9598	Error		Incremental encoder: max. interface frequency exceeded	Check configured encoder lines or reduce speed
9601	9602	Error	NoReset	Setup error wiring SCC network	Device can't detect its network address. Check wiring of cross communication, switch OFF / ON the device, if the error occurs again please contact manufacturer.
9603	9604	Error	NoReset	Setup SCC network timed out	Error while transferring the device address. Check wiring of cross communication, switch OFF / ON the device, if the error occurs again please contact manufacturer.
9605	9606	Error		Wrong predecessor address	Sequence after defining the network slave addresses has changed or error in transfer. Check wiring of cross communication, switch OFF / ON the device, if the error occurs again please contact manufacturer.

SR1	SR2	Type	Attribute	Cause	Remedy
9609	9610	Error		Wrong slave configuration on SR1	Device address is invalid or slave device is used as master. Check wiring of cross communication and try to re-upload the configuration. Switch OFF / ON the device, if the error occurs again please contact manufacturer.
9641	9642	Error		Internal error type 2	Switch OFF / ON the device, if the error occurs again please contact manufacturer.
9661	9662	Error		Internal error type 2	Switch OFF / ON the device, if the error occurs again please contact manufacturer.
9663	9664	Error		Internal error type 2	Switch OFF / ON the device, if the error occurs again please contact manufacturer.
9665	9666	Error		Internal error type 2	Switch OFF / ON the device, if the error occurs again please contact manufacturer.
9667	9668	Error		Internal error type 2	Switch OFF / ON the device, if the error occurs again please contact manufacturer.
9669	9670	Error		Internal error type 2	Switch OFF / ON the device, if the error occurs again please contact manufacturer.
9671	9672	Error		Wrong expected state of brake output BRK+ or BRK-	Check wiring at the brake outputs referring to short circuits
9681	9682	Error		Internal error type 2	Switch OFF / ON the device, if the error occurs again please contact manufacturer.
9683	9684	Error		Internal error type 2	Switch OFF / ON the device, if the error occurs again please contact manufacturer.
9685	9686	Error		Internal error type 2	Switch OFF / ON the device, if the error occurs again please contact manufacturer.
9687	9688	Error		Internal error type 2	Switch OFF / ON the device, if the error occurs again please contact manufacturer.



SR1	SR2	Type	Attribute	Cause	Remedy
9689	9690	Error		Internal error type 2	Switch OFF / ON the device, if the error occurs again please contact manufacturer.
9691	9692	Error		Internal error type 2	Switch OFF / ON the device, if the error occurs again please contact manufacturer.
9701	9702	Error		Internal error type 2	Switch OFF / ON the device, if the error occurs again please contact manufacturer.
9703	9704	Error		Internal error type 2	Switch OFF / ON the device, if the error occurs again please contact manufacturer.
9721	9722	Error		Internal error type 2	Switch OFF / ON the device, if the error occurs again please contact manufacturer.
9723	9724	Error		Internal error type 2	Switch OFF / ON the device, if the error occurs again please contact manufacturer.
9725	9726	Error		Internal error type 2	Switch OFF / ON the device, if the error occurs again please contact manufacturer.
9727	9728	Error		Internal error type 2	Switch OFF / ON the device, if the error occurs again please contact manufacturer.
9729	9730	Error		Internal error type 2	Switch OFF / ON the device, if the error occurs again please contact manufacturer.
9731	9732	Error		Internal error type 2	Switch OFF / ON the device, if the error occurs again please contact manufacturer.
9733	9734	Alarm		External FC access error	Other device inside the network has a fatal error or the cross communication is not available
9741	9742	Error		Error of the 5 V supply	Switch OFF / ON the device, if the error occurs again please contact manufacturer.
9743	9744	Error		Error of the encoder supply on connector X7	Check configured supply voltage, the existing supply voltage and the wiring

SR1	SR2	Type	Attribute	Cause	Remedy
9745	9746	Error		Error of the encoder supply on connector X8	Check configured supply voltage, the existing supply voltage and the wiring
9747	9748	Error		Error of the reference voltage supply	Switch OFF / ON the device, if the error occurs again please contact manufacturer.
9749	9750	Error		Error of the +15 V supply	Switch OFF / ON the device, if the error occurs again please contact manufacturer.
9751	9752	Error		Error of the -15 V supply	Switch OFF / ON the device, if the error occurs again please contact manufacturer.
9753	9754	Error		Error in supply parameter calculation	Switch OFF / ON the device, if the error occurs again please contact manufacturer.
9755	9756	Error		Wrong period of synchronization signal to non-safe drive	Switch OFF / ON the device, if the error occurs again please contact manufacturer.
9757	9758	Error		No synchronization signal to non-safe drive	Switch OFF / ON the device, if the error occurs again please contact manufacturer.
9771	9772	Error		Initialization error of ESM parameter	Check configured ESM function block Reload the configuration
9773	9774	Error		Monitoring time out elapsed for ESM 0	8 hours without axis movement detected Use ESM function block and increase the monitoring time or move axis >360° at least.
9775	9776	Error		Monitoring time out elapsed for ESM 1	8 hours without axis movement detected Use ESM function block and increase the monitoring time or move axis >360° at least.
9801	9802	Error		Internal error type 2	Switch OFF / ON the device, if the error occurs again please contact manufacturer.
9803	9804	Error		Internal error type 2	Switch OFF / ON the device, if the error occurs again please contact manufacturer.

SR1	SR2	Type	Attribute	Cause	Remedy
9805	9806	Error		Internal error type 2	Switch OFF / ON the device, if the error occurs again please contact manufacturer.
9807	9808	Error		Internal error type 2	Switch OFF / ON the device, if the error occurs again please contact manufacturer.
9809	9810	Error		Internal error type 2	Switch OFF / ON the device, if the error occurs again please contact manufacturer.
9941	9942	Error	NoReset	Internal error type 2	Switch OFF / ON the device, if the error occurs again please contact manufacturer.
9943	9944	Error	NoReset	Internal error type 2	Switch OFF / ON the device, if the error occurs again please contact manufacturer.
9945	9946	Error	NoReset	Internal error type 2	Switch OFF / ON the device, if the error occurs again please contact manufacturer.
9947	9948	Error	NoReset	Internal error type 2	Switch OFF / ON the device, if the error occurs again please contact manufacturer.
9949	9950	Error	NoReset	Internal error type 2	Switch OFF / ON the device, if the error occurs again please contact manufacturer.
9951	9952	Error	NoReset	Internal error type 2	Switch OFF / ON the device, if the error occurs again please contact manufacturer.
9953	9954	Error	NoReset	Internal error type 2	Switch OFF / ON the device, if the error occurs again please contact manufacturer.
9955	9956	Error	NoReset	Internal error type 2	Switch OFF / ON the device, if the error occurs again please contact manufacturer.
9957	9958	Error	NoReset	Internal error type 2	Switch OFF / ON the device, if the error occurs again please contact manufacturer.
9959	9960	Error	NoReset	Internal error type 2	Switch OFF / ON the device, if the error occurs again please contact manufacturer.

SR1	SR2	Type	Attribute	Cause	Remedy
9961	9962	Error	NoReset	Internal error type 2	Switch OFF / ON the device, if the error occurs again please contact manufacturer.
9963	9964	Error	NoReset	Internal error type 2	Switch OFF / ON the device, if the error occurs again please contact manufacturer.
9965	9966	Error	NoReset	Internal error type 2	Switch OFF / ON the device, if the error occurs again please contact manufacturer.
9967	9968	Error	NoReset	Internal error type 2	Switch OFF / ON the device, if the error occurs again please contact manufacturer.
9969	9970	Error	NoReset	Internal error type 2	Switch OFF / ON the device, if the error occurs again please contact manufacturer.
9971	9972	Error	NoReset	Internal error type 2	Switch OFF / ON the device, if the error occurs again please contact manufacturer.
9973	9974	Error	NoReset	Internal error type 2	Switch OFF / ON the device, if the error occurs again please contact manufacturer.
9975	9976	Error	NoReset	Internal error type 2	Switch OFF / ON the device, if the error occurs again please contact manufacturer.
9977	9978	Error	NoReset	Internal error type 2	Switch OFF / ON the device, if the error occurs again please contact manufacturer.
9979	9980	Error	NoReset	Internal error type 2	Switch OFF / ON the device, if the error occurs again please contact manufacturer.
9981	9982	Error	NoReset	Internal error type 2	Switch OFF / ON the device, if the error occurs again please contact manufacturer.
9983	9984	Error	NoReset	Internal error type 2	Switch OFF / ON the device, if the error occurs again please contact manufacturer.
9985	9986	Error	NoReset	Internal error type 2	Switch OFF / ON the device, if the error occurs again please contact manufacturer.

SR1	SR2	Type	Attribute	Cause	Remedy
9987	9988	Error	NoReset	Internal error type 2	Switch OFF / ON the device, if the error occurs again please contact manufacturer.
9989	9990	Error	NoReset	Internal error type 2	Switch OFF / ON the device, if the error occurs again please contact manufacturer.

## TAKE A CLOSER LOOK

Moog solutions are only a click away. Visit our worldwide Web site for more information and the Moog facility nearest to you.

### MOOG

Moog GmbH  
Hanns-Klemm-Straße 28  
D-71034 Böblingen  
Phone +49 7031 622 0  
Telefax +49 7031 622 100

[www.moog.com/industrial](http://www.moog.com/industrial)  
[drives-support@moog.com](mailto:drives-support@moog.com)

Moog is a registered trademark of Moog, Inc. and its subsidiaries.  
All quoted trademarks are property of Moog, Inc. and its subsidiaries.  
All rights reserved.

© 2018 Moog GmbH

#### **Technical alterations reserved.**

The content of our documentation have been compiled with the greatest care and in compliance with our present status of information.

Nevertheless, we would like to point that this document cannot always be updated in parallel to the technical further development of our products.

Information and specifications may be changed at any time. For information on the latest version please refer to [drives-support@moog.com](mailto:drives-support@moog.com).

ID no.: CC63329-001, 10/2018, Rev. 0.1